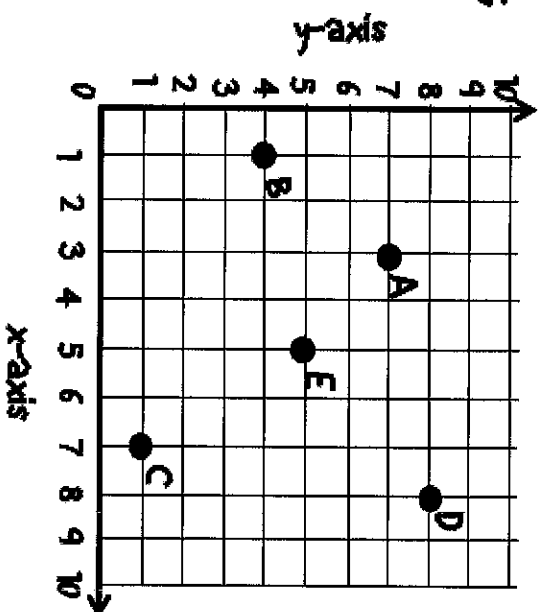


Use the coordinate grid on the right to answer the following question.

What is the ordered pair for point C?

- A. (1,4)
- B. (1,7)
- C. (5,5)
- D. (7,1)

1.

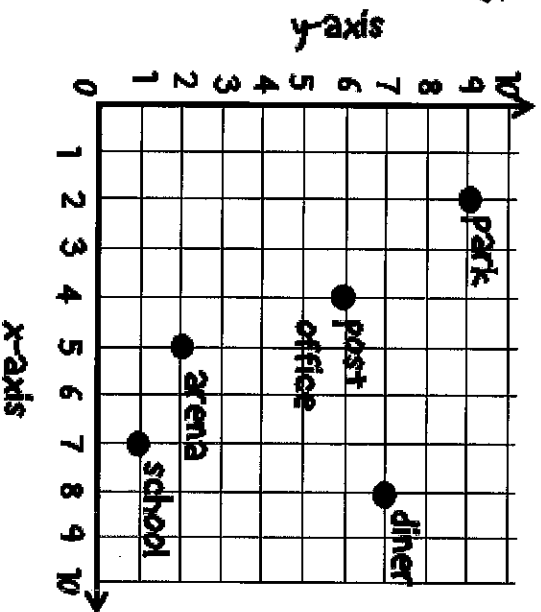


Use the coordinate grid on the right to answer the following question.

What is the location of the post office?

- A. (4,6)
- B. (2,9)
- C. (8,7)
- D. (7,1)

2.

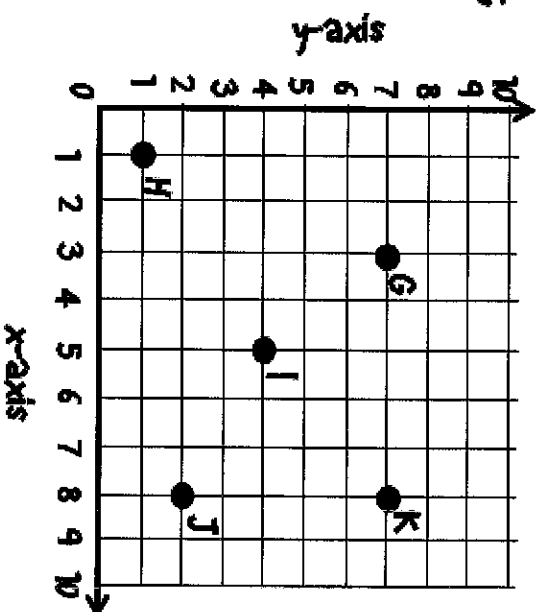


Use the coordinate grid on the right to answer the following question.

How far away is point G from point K?

- A. 5 units
- B. 6 units
- C. 7 units
- D. 8 units

3.

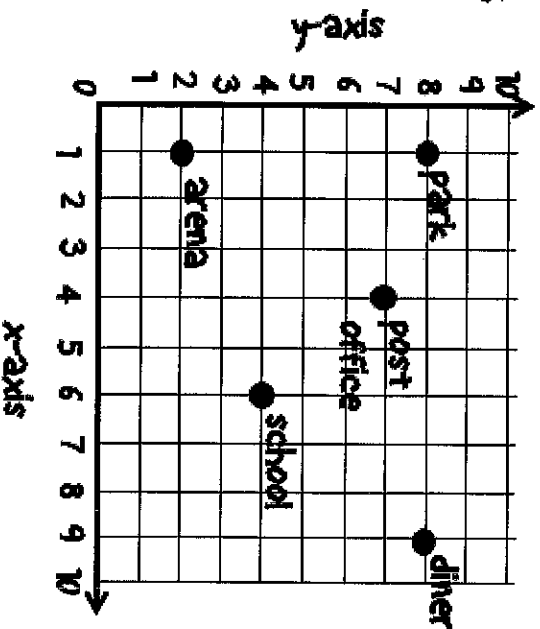


Use the coordinate grid on the right to answer the following question.

Which building is located at $(1, 2)$?

- A. park
- B. diner
- C. arena
- D. school

4.



Use the coordinate grid on the right to answer the following question.

What is the ordered pair for point Z?

- A. (6,8)
- B. (8,6)
- C. (8,2)
- D. (2,8)

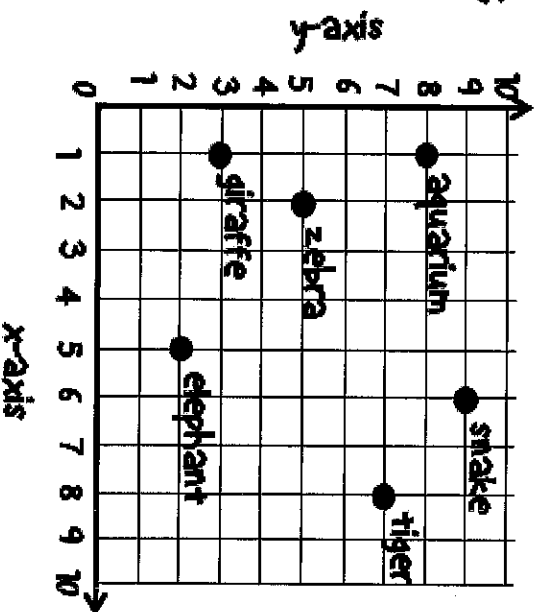
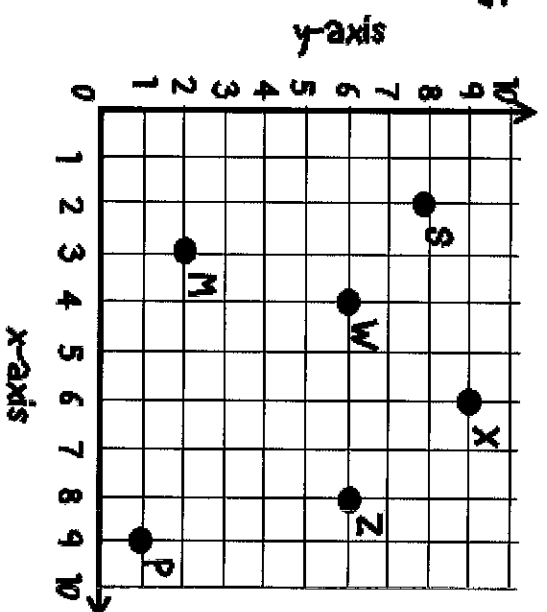
5.

Use the coordinate grid on the right to answer the following question.

What is the location of the aquarium?

- A. (6,9)
- B. (1,8)
- C. (1,3)
- D. (5,2)

6.

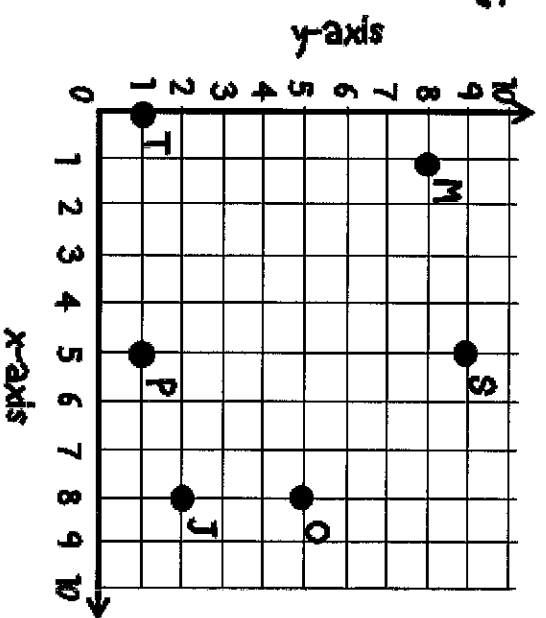


Use the coordinate grid on the right to answer the following question.

How far away is point S from point P?

- A. 5 units
- B. 6 units
- C. 7 units
- D. 8 units

7.

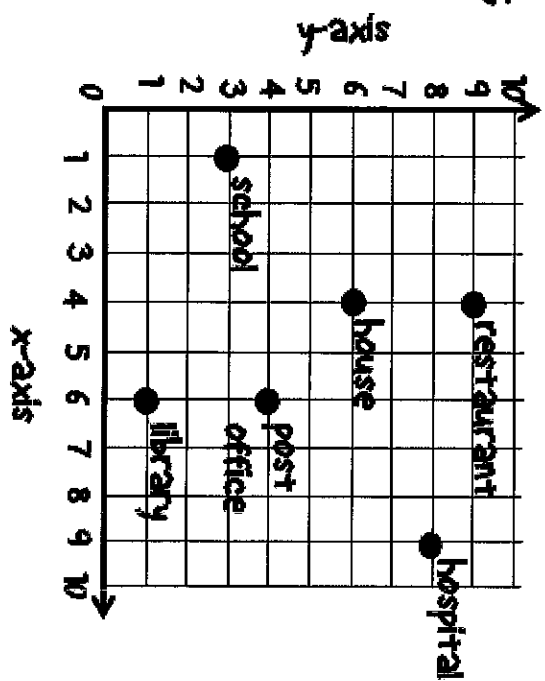


Use the coordinate grid on the right to answer the following question.

Which building is located at $(6, 4)$ P?

- A. house
- B. school
- C. post office
- D. hospital

8.

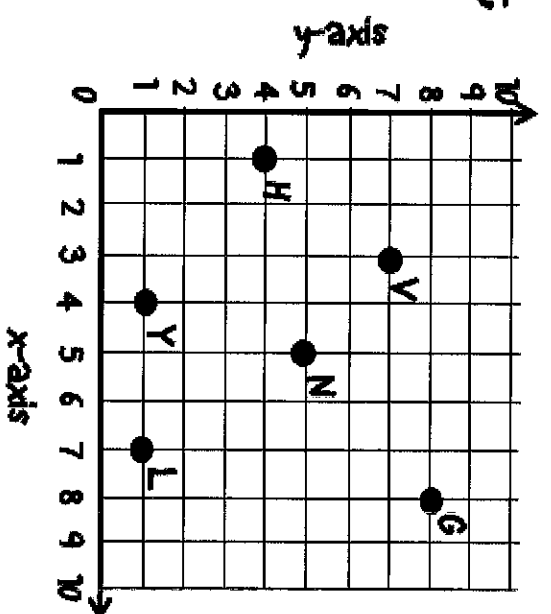


Use the coordinate grid on the right to answer the following question.

What is the ordered pair for point L?

- A. (3,7)
- B. (8,8)
- C. (7,1)
- D. (1,4)

9.

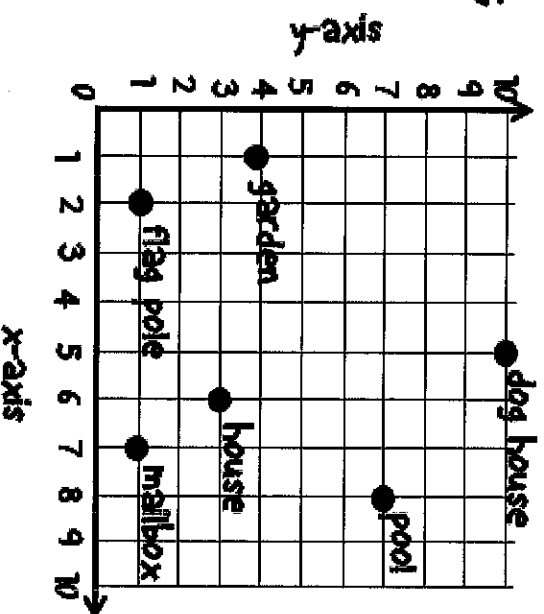


Use the coordinate grid on the right to answer the following question.

What is the location of pool?

- A. (5,10)
- B. (2,1)
- C. (6,3)
- D. (8,7)

10.

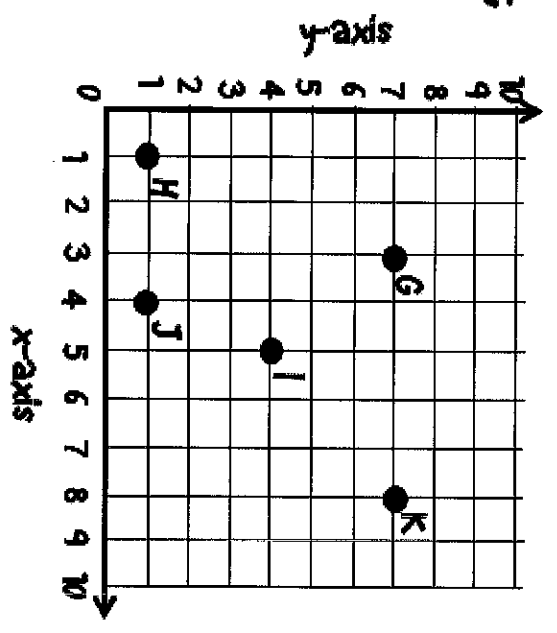


Use the coordinate grid on the right to answer the following question.

How far away is point H from point J?

- A. 1 unit
- B. 2 units
- C. 3 units
- D. 4 units

11.

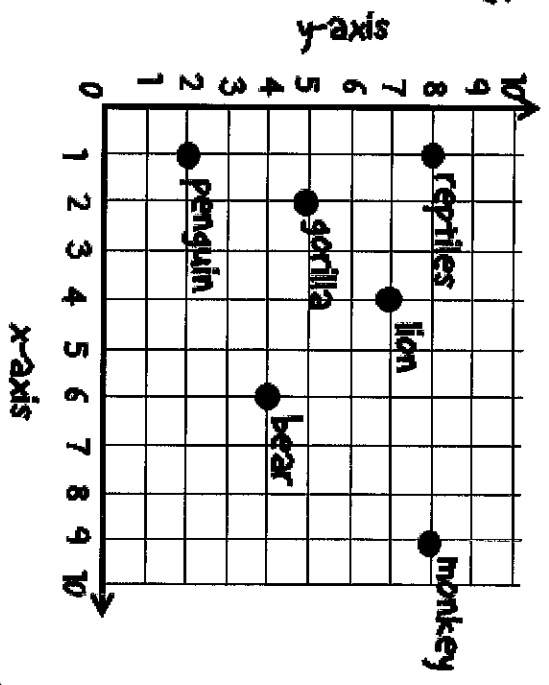


Use the coordinate grid on the right to answer the following question.

Which zoo animal is located at (9,8)?

- A. penguin
- B. gorilla
- C. lion
- D. monkey

12.



Use the coordinate grid on the right to answer the following question.

What is the ordered pair for point A?

- A. (7,1)
- B. (3,7)
- C. (8,8)
- D. (2,9)

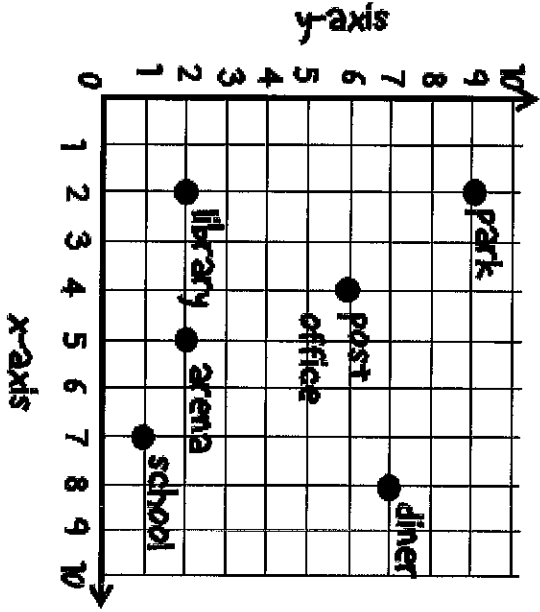
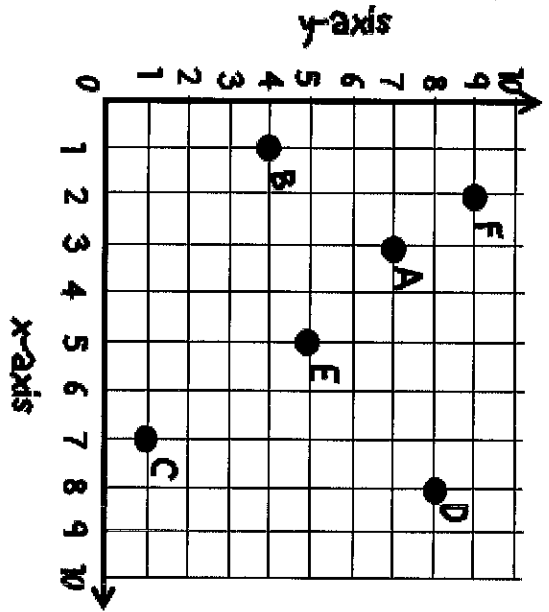
13.

Use the coordinate grid on the right to answer the following question.

What is the location of the library?

- A. (2,9)
- B. (7,1)
- C. (5,2)
- D. (2,2)

14.



Use the coordinate grid on the right to answer the following question.

How far away is point L from point G?

- A. 2 units
- B. 3 units
- C. 4 units
- D. 5 units

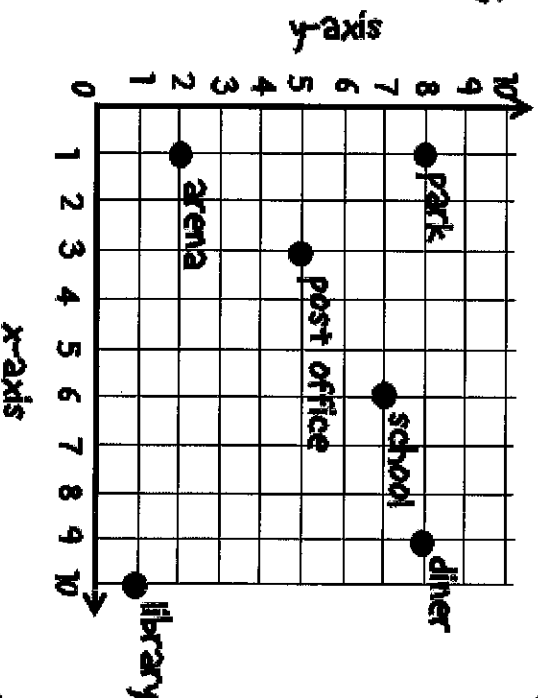
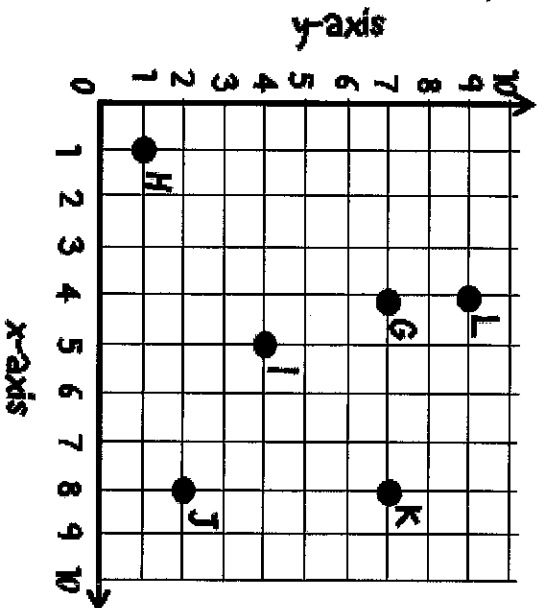
15.

Use the coordinate grid on the right to answer the following question.

Which building is located at (6, 7)?

- A. library
- B. school
- C. park
- D. diner

16.



Use the coordinate grid on the right to answer the following question.

What is the ordered pair for point S?

- A. (6,9)
- B. (8,2)
- C. (2,8)
- D. (9,1)

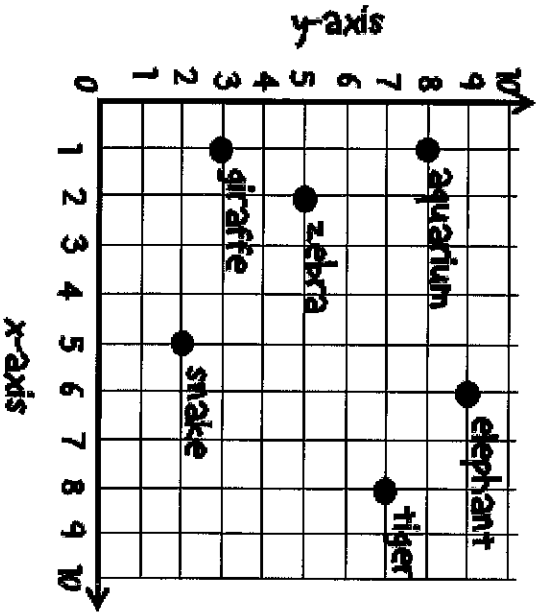
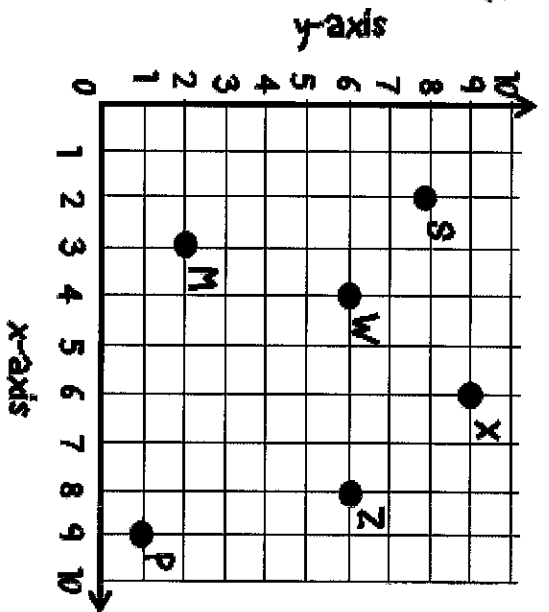
17.

Use the coordinate grid on the right to answer the following question.

What is the location of the elephant?

- A. (6,9)
- B. (1,8)
- C. (1,3)
- D. (5,2)

18.

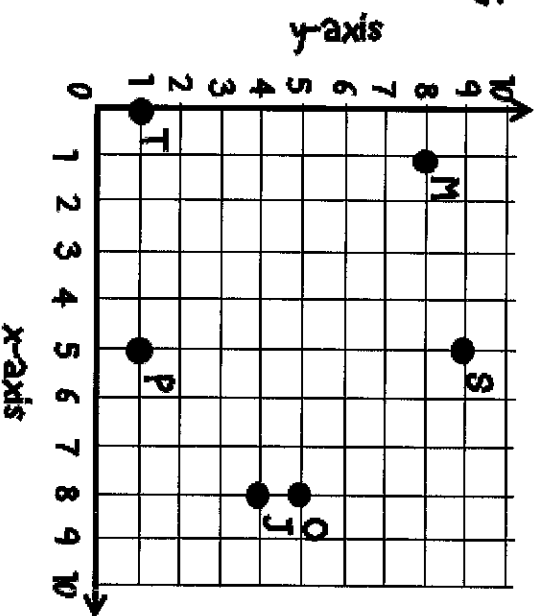


Use the coordinate grid on the right to answer the following question.

How far away is point O from point P?

- A. 1 unit
- B. 2 units
- C. 3 units
- D. 4 units

19.

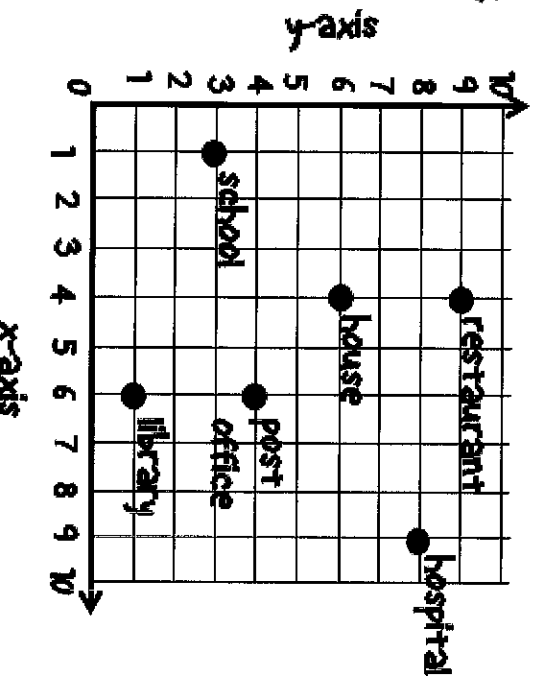


Use the coordinate grid on the right to answer the following question.

Which building is located at $(4, 9)$?

- A. house
- B. restaurant
- C. post office
- D. school

20.

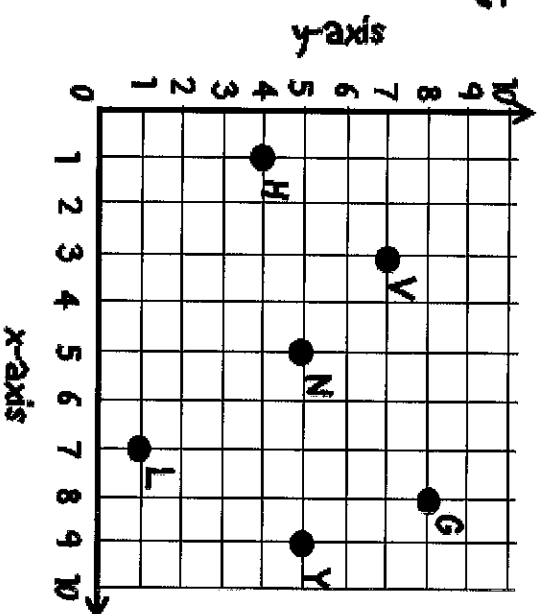


Use the coordinate grid on the right to answer the following question.

What is the ordered pair for point Y ?

- A. $(5, 9)$
- B. $(5, 5)$
- C. $(7, 1)$
- D. $(9, 5)$

21.

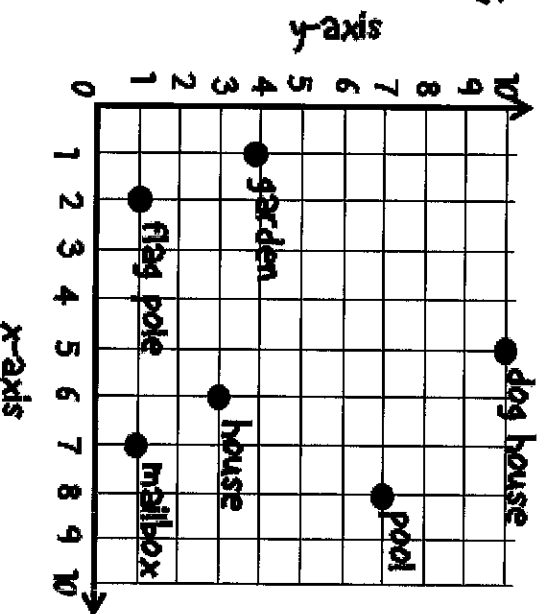


Use the coordinate grid on the right to answer the following question.

What is the location of garden?

- A. $(5, 10)$
- B. $(2, 1)$
- C. $(1, 4)$
- D. $(8, 7)$

22.

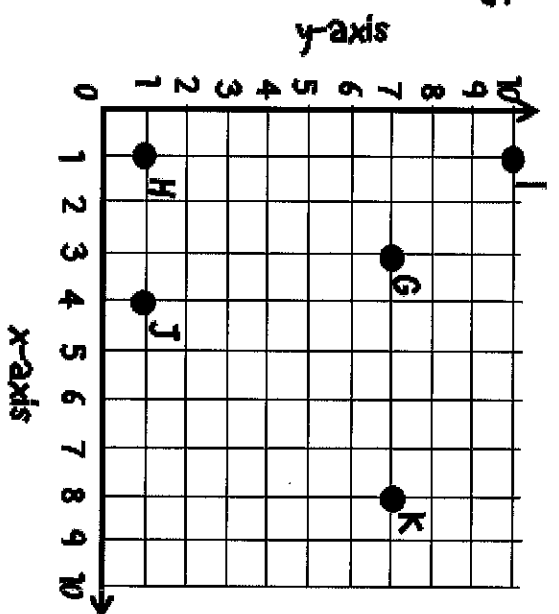


Use the coordinate grid on the right to answer the following question.

How far away is point I from point HP

- A. 6 units
- B. 7 units
- C. 8 units
- D. 9 units

23.



Use the coordinate grid on the right to answer the following question.

Which zoo animal is located at (6, 4)?

- A. penguin
- B. bear
- C. lion
- D. gorilla

24.

